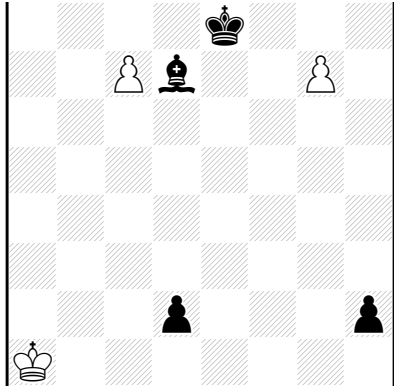


Horizontale cylinder

Het bord loopt rond, d.w.z. de 8ste rij grenst aan de 1ste rij.

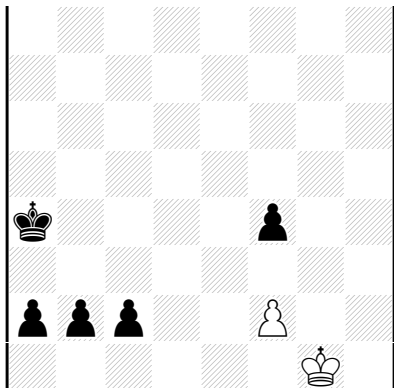
Henning MULLER Die Schwalbe 1988



h#2 (3+4) C+
Cylinder horizontaal

1.d1=L c8=P 2.h1=T g8=D♯

Ya'aqov MINTZ SuperProblem 2017



h#7 (2+5)
Cylinder horizontal

1.b1=L f3 2.Lg4 f×g4 3.c1=P g5 4.a1=T g6 5.Tb1 g7 6.Tb4 g8=D 7.Pb3 Da6♯