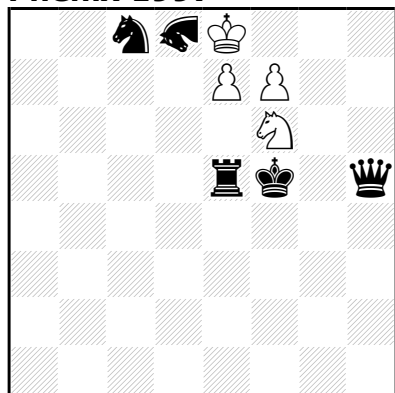


Zebra: Een (2,3)-springer.

**Roméo BEDONI
Phénix 1997**



h#2 (4+5) C+

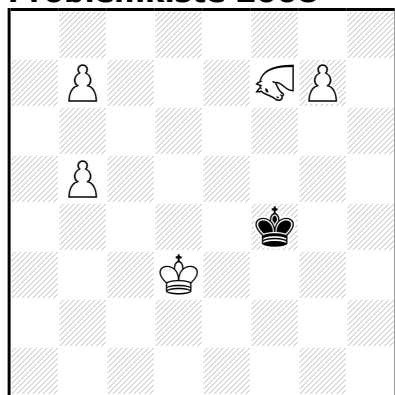
2.1.1.1

♞=Zebra

1.Ke6 e×d8=D 2.Df5 f8=P#

1.Kg6 f8=D 2.Tg5 e×d8=Zebra#

**Theodor STEUDEL
Problemkiste 2008**



h#2 (5+1) C+

♞=Zebra

1.Ke5 g8=Zebra+ 2.Kd5 b8=Zebra#